

## Cleanroom luminaires

Types: BRL, EBL, TGL



Accessories and components



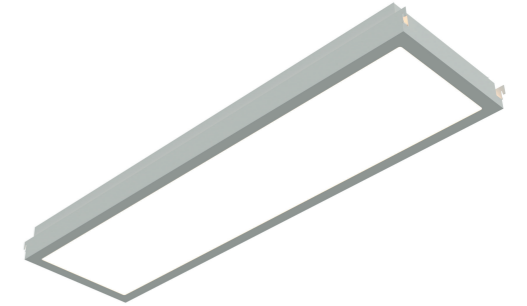
### clean-tek Cleanroom luminaires

#### Band grid luminaire BRL

For installation in the [ceil-tek ceiling system](#)

The LED recessed luminaire is designed for flush mounting in the ceil-tek ceiling system from clean-tek and is especially suitable for clean rooms with increased hygienic requirements.

The luminaire is safe for use in damp rooms in accordance with IP 65 specifications.

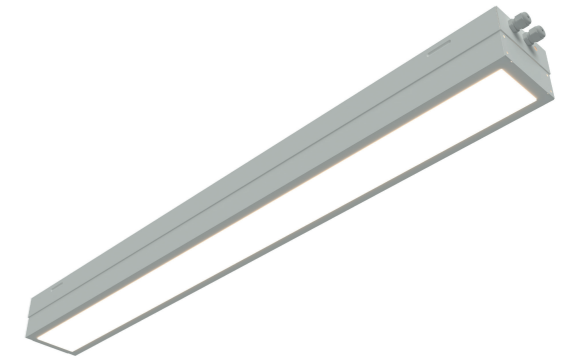


#### T-grid luminaire TGL

For installation in the [T-grid ceiling systems](#)

The LED recessed luminaire is designed for flush mounting in the T-Grid ceiling system from the company and is especially suitable for clean rooms with increased hygienic requirements.

The luminaire is safe for use in damp rooms in accordance with IP 65 specifications.



As a system supplier, clean-tek manufactures different cleanroom luminaires that are adapted to the requirements of the respective ceiling system.

Through our own production, we offer you as a system supplier a modular system of modules and components with which we develop optimal cleanroom solutions. Individual special solutions are part of our standard.

Thanks to the flexibility of our system components, we can guarantee almost unlimited variability.

All clean-tek luminaires meet the special cleanroom requirements for illuminance, luminaire sealing and cleanability.

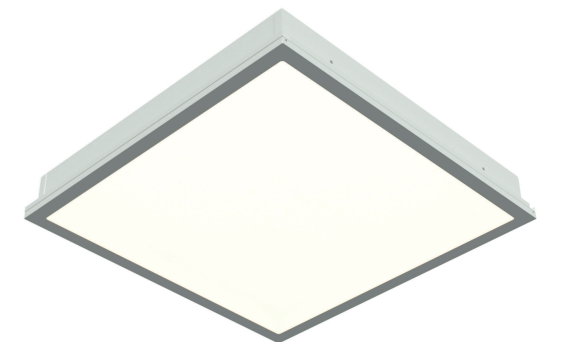
Equipped with professional LED technology and designed as recessed luminaires, they are compatible with all clean-tek ceiling systems and meet the highest hygienic design principles. The clean-tek luminaires can also be integrated into other ceilings.

#### Recessed luminaire EBL

For installation in the [clean-ceil ceiling system](#)

The LED recessed luminaire is designed for flush mounting in the ceil-tek ceiling system from clean-tek and is especially suitable for clean rooms with increased hygienic requirements.

The luminaire is safe for use in damp rooms in accordance with IP 65 specifications.



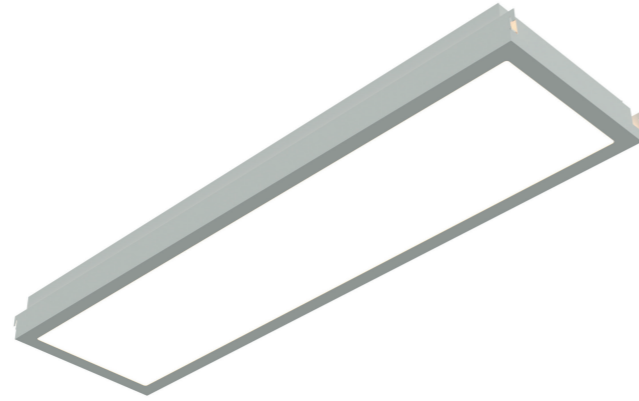


## Band grid luminaire BRL

Recessed luminaire with highly efficient LED modules for installation in the ceil-tek ceiling system

### Features and benefits:

- Air- and particle-tight LED cleanroom luminaire
- For flush mounting in the ceil-tek cleanroom ceiling system
- Simply hooked between the two ceiling beams
- No cut-out in the ceiling require
- Very good energy efficiency
- Available with 60 or 100 Watt driver
- Optional control via DALI-bus-system
- When the luminaire is opened, the glazed sheet metal remains in the cleanroom ceiling. Therefore, the cleanroom status is not cancelled during maintenance.



### Technical data:

Housing	Coated sheet steel, colour similar to RAL 9010, abrasion-resistant and easy to clean
Cover plate	ESG safety glass, satinised, closes flush against the surrounding seal
Size (L x W)	1080 x 300 mm suitable for ceil-tek ceiling grid
Connection	220 - 240 V
Protection class cleanroom side	Cleanroom side IP 65 From above IP 20
Bulb replacement	From above. The glazed sheet remains in the cleanroom ceiling. The cleanroom status does not have to be cancelled.
Equipment	<ul style="list-style-type: none"> <li>■ 60 watt or 100 watt driver</li> <li>■ Emergency lighting function</li> <li>■ EM converter</li> </ul>
Light colour	4000 K
Luminous flux	8330 lm with 60W driver 9630 lm with 100W driver
Luminous efficacy	129.4 lm/W with 60W driver 126.5 lm/W with 100W driver
Built according to	EN 60598   EN 55015   EN 61547   EN 63000

### Options:

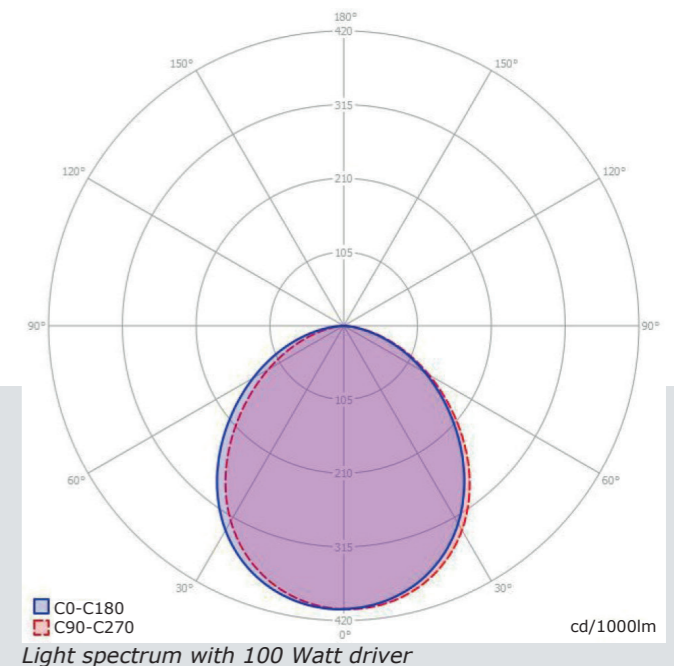
- Dimmable lighting through use of a DALI bus system
- Switching unit for external emergency power
- Change of light colour
- Yellow light

**!** In accordance with DIN EN 62471 „Photobiological safety of lamps and lamp systems“, this luminaire was classified in the „free group“.

**This means for you, the user:**

**No risk!**

There is no risk of damage to the eye, even if you look permanently in the direction of the light direction of the light source (unlimited exposure duration).



## T-grid luminaire TGL

Recessed luminaire with highly efficient LED modules for installation in the T-grid ceiling system

### Features and benefits:

- Factory-made, air- and particle-tight LED cleanroom luminaire
- For flush mounting in the T-grid cleanroom ceiling system
- Is integrated into the ceiling grid from above between 2 ceiling panels
- No cut-out in the ceiling panel required
- Very good energy efficiency
- Version with 60 or 100 watts driver
- Optional control via DALI bus
- Can be opened without tools
- When the luminaire is opened, the glazed sheet metal remains in the cleanroom ceiling. Therefore, the cleanroom status is not cancelled during maintenance.



### Technical data:

Housing	Coated sheet steel, colour similar to RAL 9010, abrasion-resistant and easy to clean
Cover plate	ESG safety glass, satinised, closes flush against the surrounding seal
Equipment	<ul style="list-style-type: none"> <li>■ 60 W or 100 W driver</li> <li>■ Emergency lighting function</li> <li>■ EM converter</li> </ul>
Sizes (L x W)	<p>With 60 Watt driver: 600x150 mm   900x150 mm   1200x150 mm</p> <p>With 100 watt driver: 900x150 mm   1200x150 mm</p> <p>suitable for T-grid ceiling grid</p>
Connection	220 - 240 V
Protection class Cleanroom side	Cleanroom side IP 65 From above IP 20
Bulb replacement	From above. The glazed plate remains in the cleanroom ceiling. The cleanroom status does not have to be cancelled.
Light colour	4000 K
Luminous flux	<p>With 60 Watt driver: 6020 lm for size 600 mm 6710 lm for size 900 und 1200 mm</p> <p>With 100 Watt driver: 8090 lm for size 900 und 1200 mm</p>
Luminous efficacy	104.4 lm/W with 60W driver 106.17 lm/W with 100W driver
Built according to	EN 60598   EN 55015   EN 61547   EN 63000

### Options:

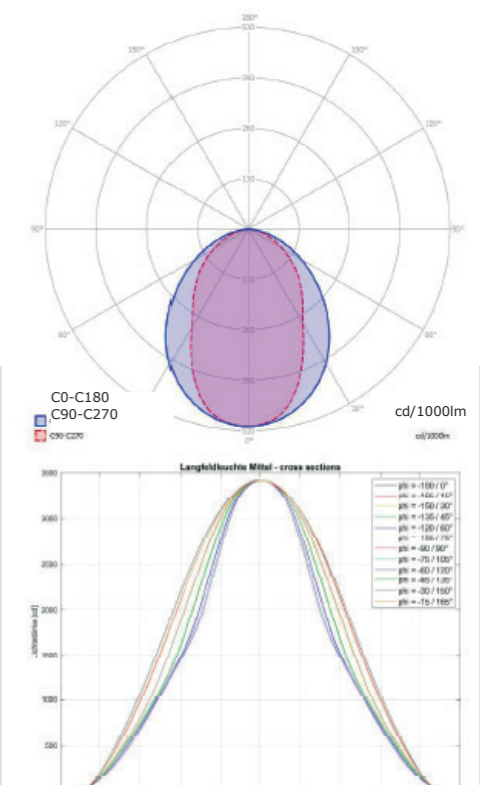
- Dimmable lighting through use of a DALI bus system
- Switching unit for external emergency power
- Yellow light

**!** In accordance with DIN EN 62471 „Photobiological safety of lamps and lamp systems“, this luminaire was classified in the „free group“.

**This means for you, the user:**

#### No risk!

There is no risk of damage to the eye, even if you look permanently in the direction of the light direction of the light source (unlimited exposure duration).



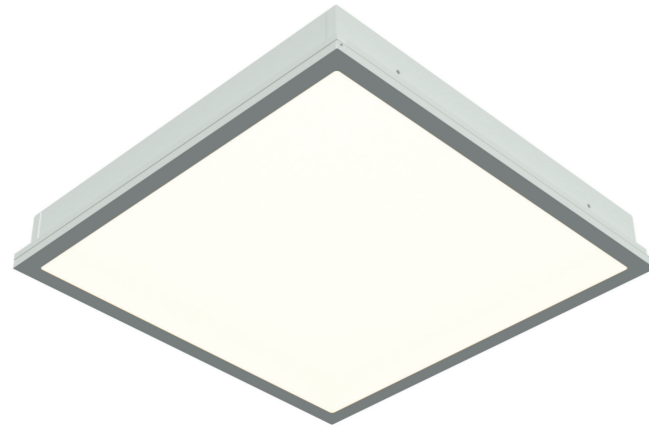


## Recessed luminaire EBL

Recessed luminaire with highly efficient LED modules for installation in the clean-ceil ceiling system

### Features and benefits:

- Factory-made, air- and particle-tight LED cleanroom luminaire
- For flush mounting in common cleanroom ceiling systems
- Is hooked into the ceiling grid from above
- Very good energy efficiency
- Version with 60 or 100 watts driver
- Optional control via DALI bus
- The luminaire is sealed at the top. Therefore, the cleanroom status is not cancelled during maintenance.



### Technical data:

Housing	Coated sheet steel, colour similar to RAL 9010, abrasion-resistant and easy to clean.
Cover plate	ESG safety glass, satinised, closes flush against the surrounding seal.
Equipment	<ul style="list-style-type: none"> <li>■ 60 W or 100 W driver</li> <li>■ Emergency lighting function</li> <li>■ EM converter</li> </ul>
Sizes (L x W)	598 x 598 x 90 mm or 623 x 623 x 90 mm
Connection	220 - 240 V
Protection class cleanroom side	Cleanroom side IP 65 From above IP 20
Bulb replacement	Cleanroom side. The cleanroom status does not be cancelled
Light colour	4000 K
Luminous flux	7460 lm with 60W driver 9300 lm with 100W driver
Luminous efficacy	121.1 lm/W with 60W driver 91.29 lm/W with 100W driver
Built according to	EN 60598   EN 55015   EN 61547   EN 63000

### Options:

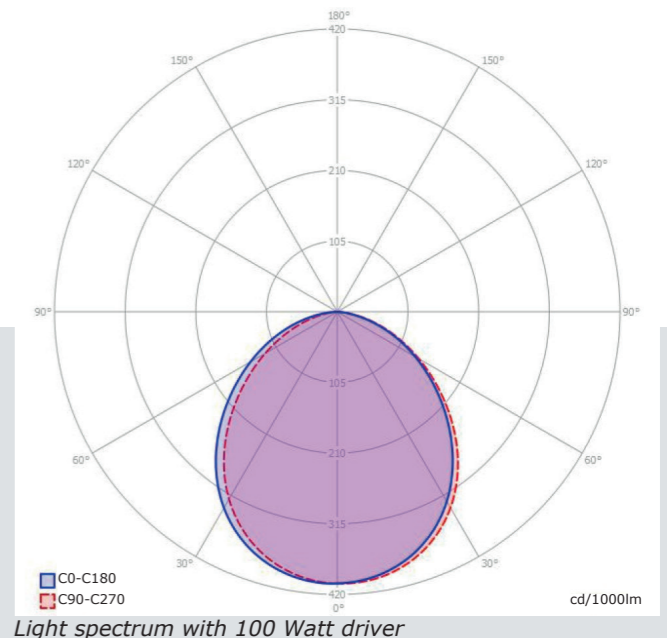
- Dimmable lighting through use of a DALI bus system
- Switching unit for external emergency power
- Change of light colour
- Yellow light

**!** In accordance with DIN EN 62471 „Photobiological safety of lamps and lamp systems“, this luminaire was classified in the „free group“.

**This means for you, the user:**

**No risk!**

There is no risk of damage to the eye, even if you look permanently in the direction of the light direction of the light source (unlimited exposure duration).



**Clean-tek** stands for first-class cleanroom technology  
from our own production.

As a pioneer in cleanroom technology, **clean-tek** has played a key role in shaping the development of modern cleanroom technology since 1986.

Tradition, innovation and experience are the values that still characterise **clean-tek** today and at the same time the key to constant growth and success.

## Services

- Engineering, implementation and service of cleanroom systems
- Development of customised special solutions
- In-house production of all essential cleanroom components
- Interface management during the entire project
- Consulting and training
- On request, delivery of turnkey cleanroom systems as a general contractor
- Consultation and training

## Products

- Cleanroom ceiling systems
- Cleanroom wall systems
- Cleanroom door systems
- Laminar flow modules
- Weighing units and sampling cabins
- Decontamination showers
- Accessories and components among others:
  - Material pass-throughs
  - Lights
  - Filter fan unit